

## Have You Seen the Maxwell® I6 Applications Database?

The Maxwell® I6 Applications Database was developed to facilitate sharing of Maxwell® I6-related knowledge. The database contains information about samples tested by both Promega scientists and Maxwell® users throughout the world. This database allows you to search by keyword or browse through folders and contains information about samples processed, typical yields achieved and downstream applications tested.

### Applications Include:

- DNA from Formalin-Fixed, Paraffin-Embedded Mouse Tissues
- DNA from Saliva
- RNA from PAXgene® Collected Whole Blood
- RNA from Adipose Tissues
- RNA and DNA from *Spirulina* (blue-green algae)

The following are several recently submitted entries to the Maxwell® I6 Applications Database.

### RNA from Adipose Tissues

Doug Wiczorek, Promega Technical Services Scientist

Maxwell® I6 Total RNA Purification Kit was used to extract RNA from rat adipose tissue. Fifty to 150 mg adipose tissue was processed per cartridge. Varying amounts of Clearing Agents were tested (0.5–1.5x), and half the standard recommended amount of Clearing Agent was found to give the best yield, likely due to the relatively low amount of RNA in the adipose tissue. RNA yields were ~2–4 µg, and beta actin and GAPDH transcripts were detected by RT-PCR. No contaminating genomic DNA was detectable by real-time PCR (data not shown).

### DNA from Saliva

Rudy Zhao, Promega Technical Services Scientist

Maxwell® I6 Cell DNA Purification Kit was used to extract DNA from human saliva. Saliva (400 µl) was transferred directly to well #1 of the Maxwell® I6 Cell DNA Purification Cartridge and processed following the SEV Cell DNA method. Saliva yielded 0.7–3 µg DNA. Eluted DNA was amplifiable using human DNA-specific primers and eubacterial 16S ribosomal primers.

### DNA from Formalin-Fixed, Paraffin-Embedded Mouse Tissues

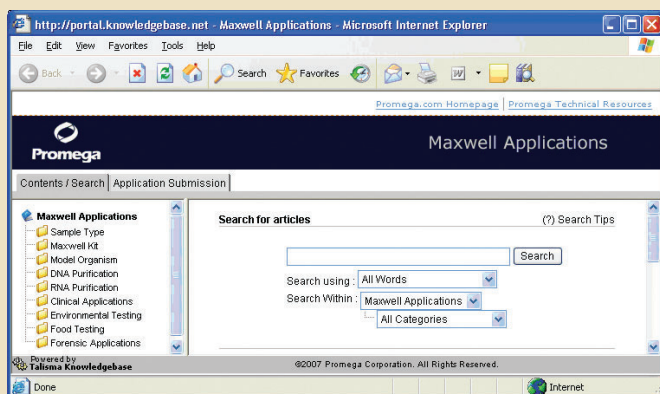
Lynn Litterer, Promega Technical Services Scientist

DNA IQ™ Casework Sample Kit for Maxwell® I6 (Cat.# ASI210) was used to extract DNA from formalin-fixed paraffin embedded mouse intestine tissue sections (5 microns). The Tissue and Hair Extraction Kit (for use with DNA IQ™ Kit; Cat.# DC6740) was used for preprocessing of samples. Sections were incubated with 1.8 mg/ml Proteinase K and 100 mM DTT in Incubation Buffer for 16 hours at 56 °C, then transferred to well #1 of the DNA IQ™ Casework Sample Cartridge. The LEV (Low Elution Volume) setting and Forensic method were used, and DNA was eluted in 100 µl Elution Buffer. Eluted DNA was not detectable by spectrophotometry, but DNA was amplified by end-point PCR and real-time PCR.

These and many more applications for the Maxwell® I6 Instrument are available at the click of your mouse from the online database. Search for information about a sample type that interests you.

Join our community of Maxwell® users by submitting your data today at:

[www.promega.com/maxwellI6/applications/submission.asp](http://www.promega.com/maxwellI6/applications/submission.asp)



[www.promega.com/maxwellI6/applications](http://www.promega.com/maxwellI6/applications)